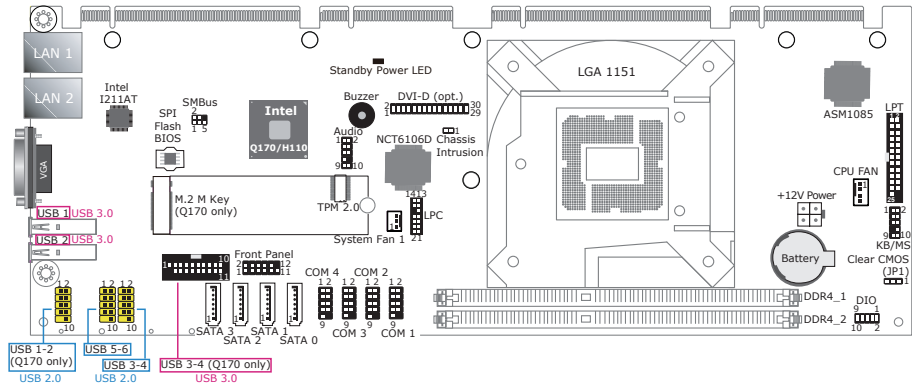


DFI

PIC-Q170/H110 Quick Reference

Board Layout and Jumper Settings



Clear CMOS (JP1)

Function	Jumper Cap
Normal (default)	1-2 On
Clear CMOS	2-3 On

Note: Additional internal I/O USB 2.0 (USB 1-2) and USB 3.0 (USB 3-4) are only present for Q170 version. Please refer to the datasheet for detail.

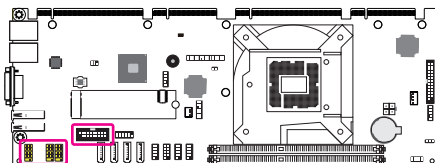
Pin Assignments for I/O Connectors

USB 2.0 Headers (for Internal I/O USB 1-6)

Pin	Assignment	Pin	Assignment
1	PWR	2	PWR
3	DATA-	4	DATA-
5	DATA+	6	DATA+
7	GND	8	GND
9	---	10	NC

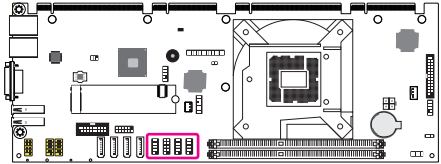
USB 3.0 Headers (for Internal I/O USB 3-4)

Pin	Assignment	Pin	Assignment
1	PWR	20	---
2	RX-	19	PWR
3	RX+	18	RX-
4	GND	17	RX+
5	TX-	16	GND
6	TX+	15	TX-
7	GND	14	TX+
8	DATA-	13	GND
9	DATA+	12	DATA-
10	Over Current Protection	11	DATA+



COM Ports (COM 1-4)

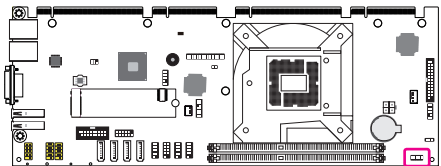
Pin	RS232	RS422 Full Duplex	RS485
1	DCD-	TXD-	DATA-
2	RD	TXD+	DATA+
3	TD	RXD+	NC
4	DTR-	RXD-	NC
5	GND	GND	GND
6	DSR-	NC	NC
7	RTS-	NC	NC
8	CTS-	NC	NC
9	RI-	NC	NC



Note: COM 3 & 4 are available for all three modes, i.e. RS232, RS422 Full Duplex, and RS485. COM 1 & 2 on the other hand are only available for RS232.

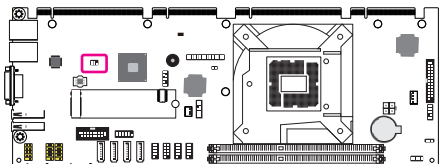
Digital I/O (DIO)

Pin	Function	Pin	Function
1	DIO7	2	DIO6
3	DIO5	4	DIO4
5	DIO3	6	DIO2
7	DIO1	8	DIO0
9	5V	10	GND



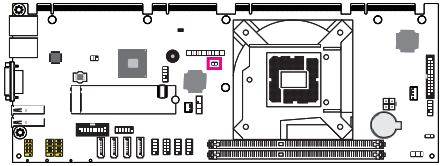
SMBus

Pin	Assignment	Pin	Assignment
1	3V3DU	2	GND
3	SMB_CLK	4	SMB_DATA
5	SMB_ALERT	6	---



Chassis Intrusion

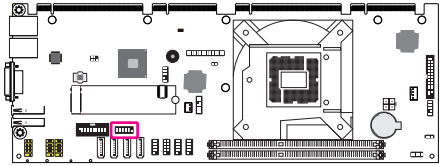
Pin	Function	Pin	Function
1	Signal	2	GND



Front Panel

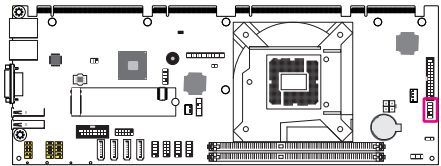
Pin	Assignment	Pin	Assignment
1	NC	2	LED Power
3	HDD Power	4	LED Power
5	Signal	6	Signal
7	GND	8	GND
9	Signal	10	Signal
11	NC	12	---

H D - L E D
P W R - L E D
R E S E T
A T X - S W



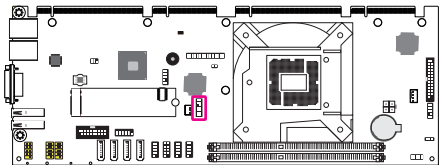
PS/2 Keyboard/Mouse (KB/MS)

Pin	Assignment	Pin	Assignment
1	KBCLK	2	MSCLK
3	KBDATA	4	MSDATA
5	GND	6	GND
7	---	8	GND
9	KBMS POWER	10	KBMS POWER



LPC

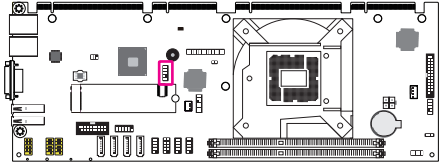
Pin	Assignment	Pin	Assignment
1	CLK	2	LAD1
3	RST#	4	LAD0
5	FRAME#	6	3V3
7	LAD3	8	GND
9	LAD2	10	---
11	SERIRQ	12	GND
13	5VSB	14	5V



Note: The LPC connector can be mounted with an EXT RS232/RS485 card for 4 additional COM ports.

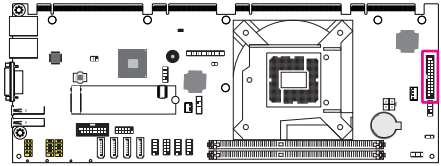
Audio

Pin	Assignment	Pin	Assignment
1	AUD LINK BCLK	2	+12V
3	AUD LINK RST-	4	3V3
5	AUD LINK SDIO	6	GND
7	AUD LINK SDO	8	---
9	AUD LINK SYNC	10	5V



Parallel Port (LPT)

Pin	Assignment	Pin	Assignment
1	STB-	2	AFD-
3	PD_C_0	4	ERP_WAKE-
5	PD_C_1	6	P_INT-
7	PD_C_2	8	SLIN-
9	PD_C_3	10	GND
11	PD_C_4	12	GND
13	PD_C_5	14	GND
15	PD_C_6	16	GND
17	PD_C_7	18	GND
19	ACK-	20	GND
21	BUSY	22	GND
23	PE	24	GND
25	SLCT	26	---



DFI reserves the right to change the specifications at any time prior to the product's release. For the latest information about the product, please visit the document download page at go.dfi.com/PIC-Q170-H110 or via the QR code to the right.

