

EC70A-ADN

Fanless Embedded System



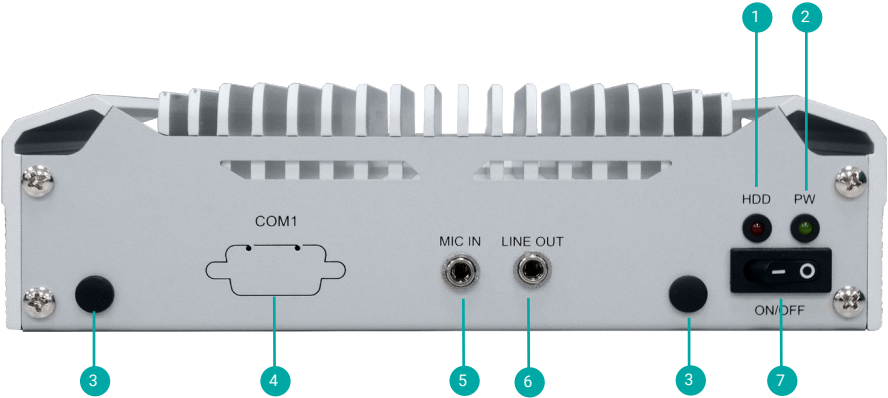
Package Contents

- 1 EC70A-ADN System Unit



Product Overview

Front View



1 HDD LED

2 Power LED

3 Antenna Hole

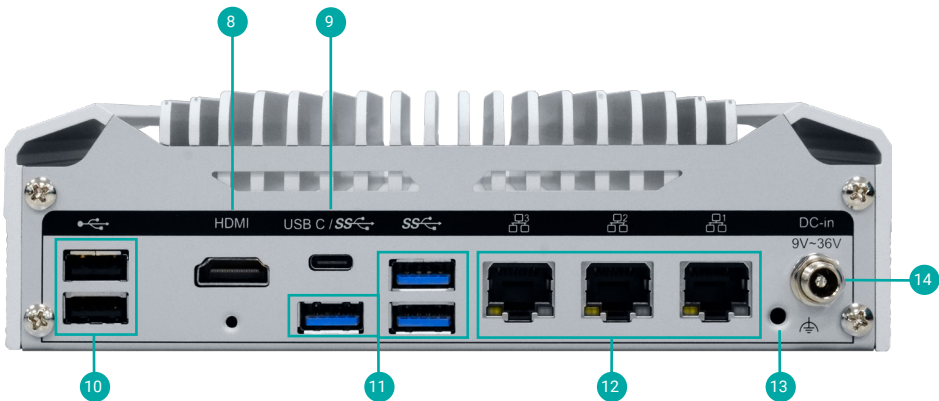
4 COM1

5 Mic-In

6 Line-Out

7 Power Button

Rear View



- 8 HDMI
- 9 Type-C DP Alt. Mode
- 10 USB 2.0
- 11 USB 3.2

- 12 LAN1~3
- 13 Grounding Hole
- 14 DC Jack

Removing the Chassis Cover

Please read and follow the instructions below to open the system.

1. Make sure the system and all other peripheral devices connected to it have been powered off.
2. Disconnect all power cords and cables.

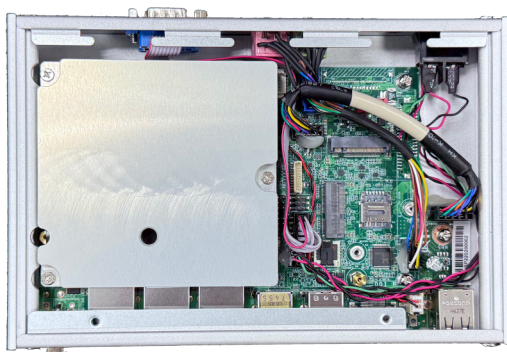
Step 1:

The 2 screws on the bottom of the system are used to secure the bottom cover to the chassis. Remove the screws and put them in a safe place for later use. Lift the bottom cover upward to open the system.



Step 2:

The heat shield and the board can be easily accessed after the chassis cover is removed.



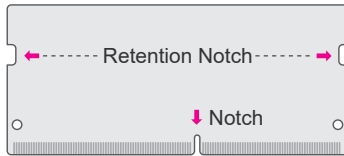
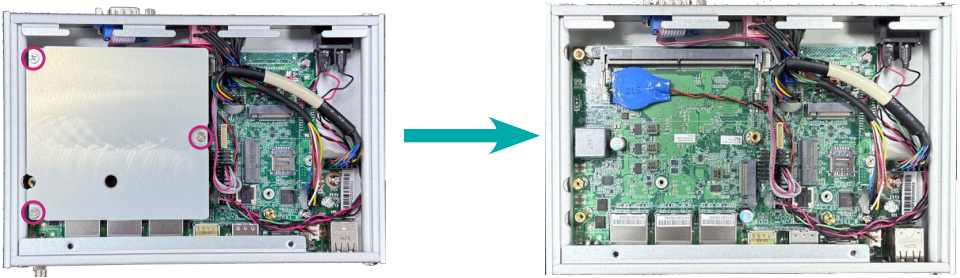
Inserting a SO-DIMM Module

Before installing the memory module, please read and follow the safety cautions below.

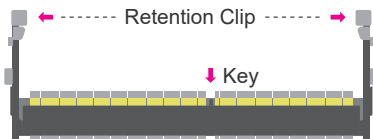
1. Make sure the PC and all other peripheral devices connected to it has been powered down.
2. Disconnect all power cords and cables.
3. Locate the SO-DIMM socket on the system board.
4. Make sure the notch on memory card is aligned to the key on the socket.

Step 1:

Remove the 3 screws of the heat shield and put them in a safe place for later use.
Remove the heat shield and the SO-DIMM socket is readily accessible.

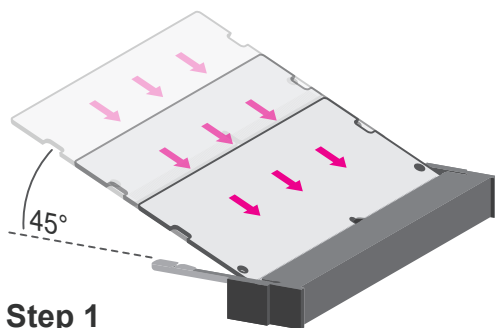


««« DDR5 SO-DIMM



««« Socket Top View

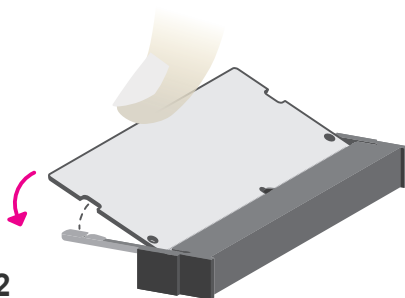
Please follow the steps below to install the memory card into the socket.



Step 1

Step 2:

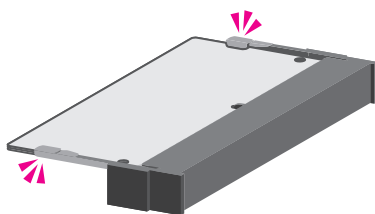
Insert the memory card into the slot while making sure 1) the notch and the key are aligned, and 2) the non-connector end rises approximately 45 degrees horizontally. Press the card firmly into the socket while applying and maintaining even pressure on both ends.



Step 2

Step 3:

Press the end of the card far from the socket down while making sure the retention notch and the clip align as indicated by the dotted line in the illustration. If the retention notch and the clip do not align, please remove the card and re-insert it. Press the card all the way down.



Step 3

Step 4:

The clips snap automatically and abruptly to the retention notches of the card sounding a distinctive click, and lock the card in place. Inspect that the clip sits in the notch. If not, please pull the clips outward, release and remove the card, and mount it again.

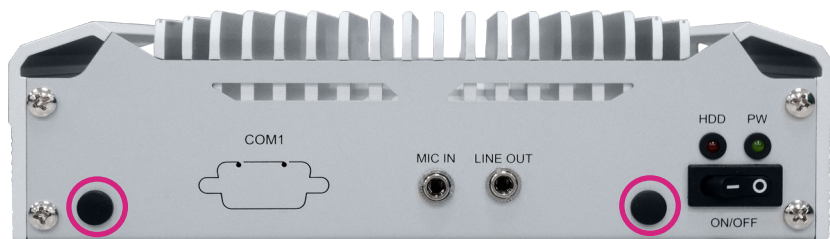
Installing an Antenna

Before installing the antenna, please make sure that the following safety cautions are wellattended.

1. Make sure the PC and all other peripheral devices connected to it has been powered down.
2. Disconnect all power cords and cables.

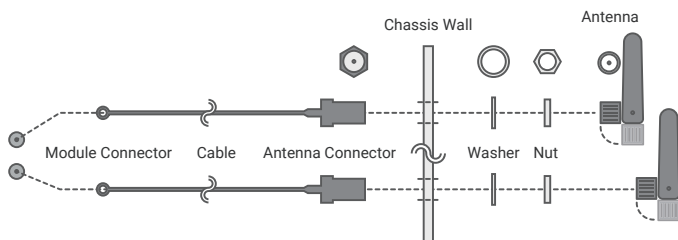
Step 1:

There are antenna holes reserved on the front side of the system and covered by rubber plugs. Please remove the plug prior to installing an antenna.



Step 2:

Connect the internal cable to the board's antenna connector, screw the antenna connector through the antenna hole with washers and nuts, and screw on the antenna as illustrated below.



DFI reserves the right to change the specifications at any time prior to the product's release. This QR may be based on the product's revision. For more documentation and drivers, please visit the download page at www.dfi.com/downloadcenter, or via the QR codes to the right.

