

Quick Installation Guide

VC500-CMS-MXM

In-Vehicle Edge AI System

www.dfi.com



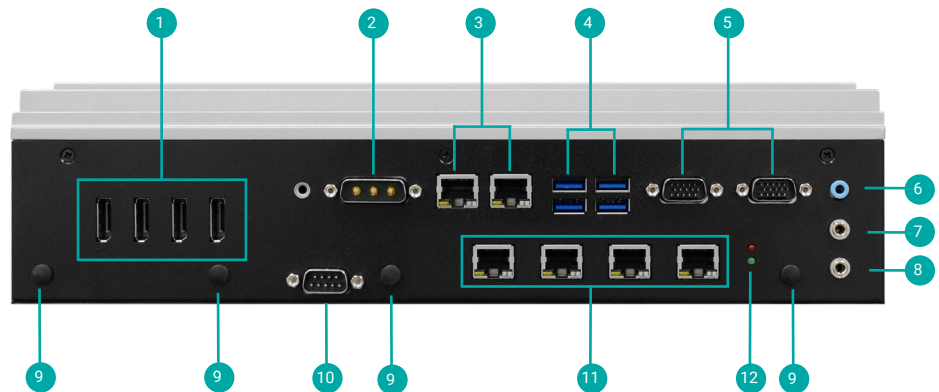
Package Contents

• 1 VC500-CMS-MXM System Unit
• 1 3W3 Adaptor Cable
• 1 Mounting Bracket
• 1 Power Connector



Product Overview

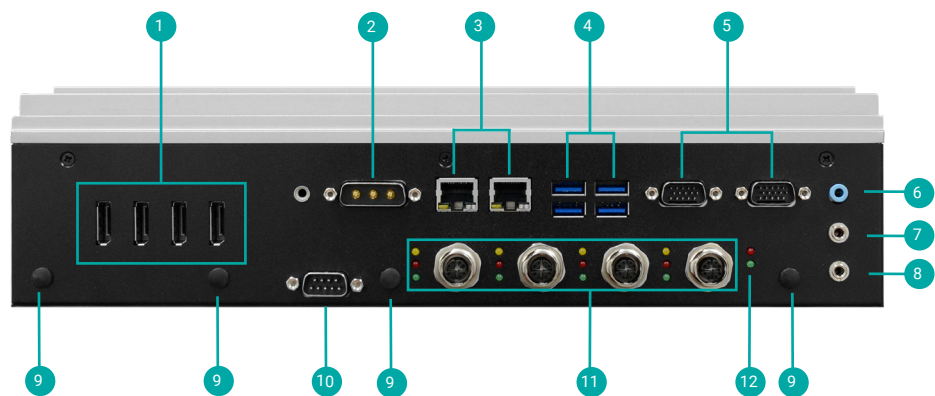
Front View - 4PoE



- 1 Display Ports
- 2 3W3 Connector
- 3 LAN 1/2
- 4 USB 3.1 Gen 2
- 5 DIO
- 6 Line-Out

- 7 Line-In
- 8 Mic-In
- 9 Antenna Hole
- 10 COM5
- 11 PoE
- 12 LED Indicators

Front View - 4 PoEM12



1 Display Ports

2 3W3 Connector

3 LAN 1/2

4 USB 3.1 Gen 2

5 DIO

6 Line-Out

7 Line-In

8 Mic-In

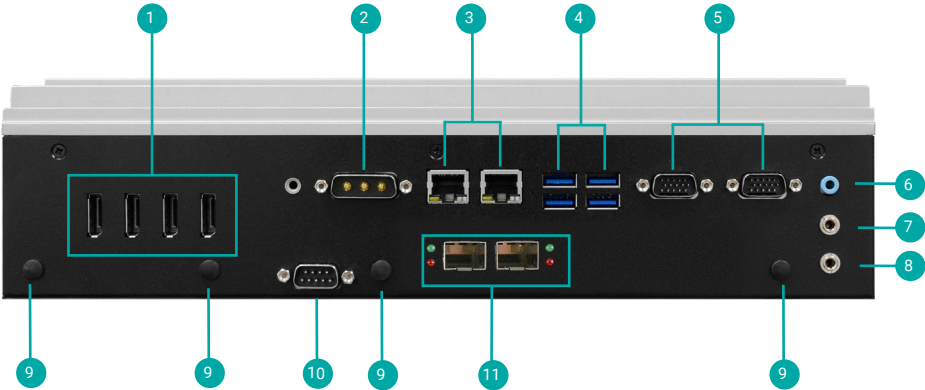
9 Antenna Hole

10 COM5

11 PoE

12 LED Indicators

Front View - 10G



1 Display Ports

2 3W3 Connector

3 LAN 1/2

4 USB 3.1 Gen 2

5 DIO

6 Line-Out

7 Line-In

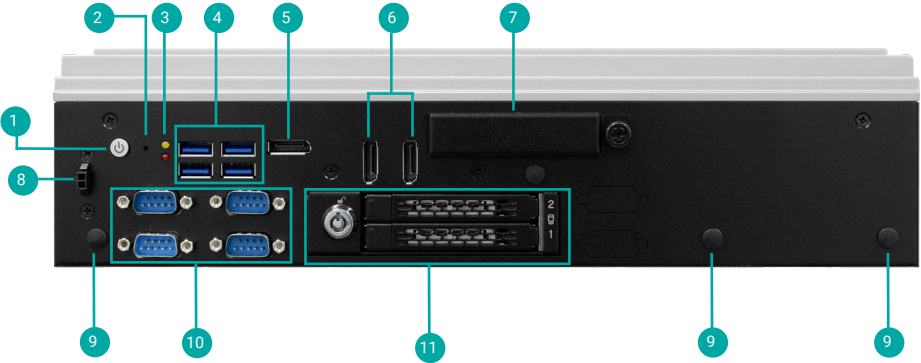
8 Mic-In

9 Antenna Hole

10 COM5

11 10g

Rear View



1 Power Button

2 Reset Button

3 Power Status LED (Yellow)
Storage Activity LED (Red)

4 USB 3.1 Gen 2

5 DP++/ HDMI

6 DP++

7 SIM Slots

8 Remote Switch

9 Antenna Hole

10 COM 1/2/3/4

11 2.5" SATA Drive Bays

Removing the Chassis Cover

Please observe the following guidelines and follow the instructions to open the system.

1. Make sure the system and all other peripheral devices connected to it have been powered off.
2. Disconnect all power cords and cables.

Step 1:

Turn the system upside down to remove the 4 screws on the bottom. The 12 screws on both left and right sides of the system are used to secure the cover to the chassis. Remove the screws and put them in a safe place for later use.

Bottom View



Left View

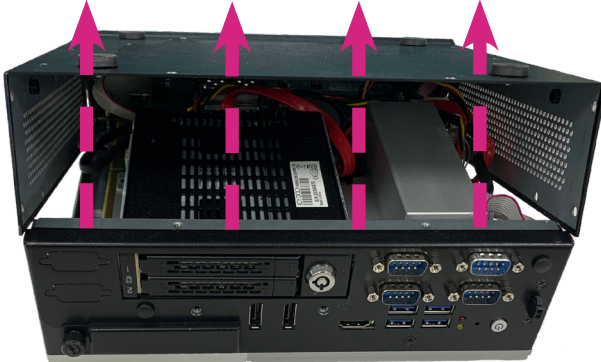


Right View



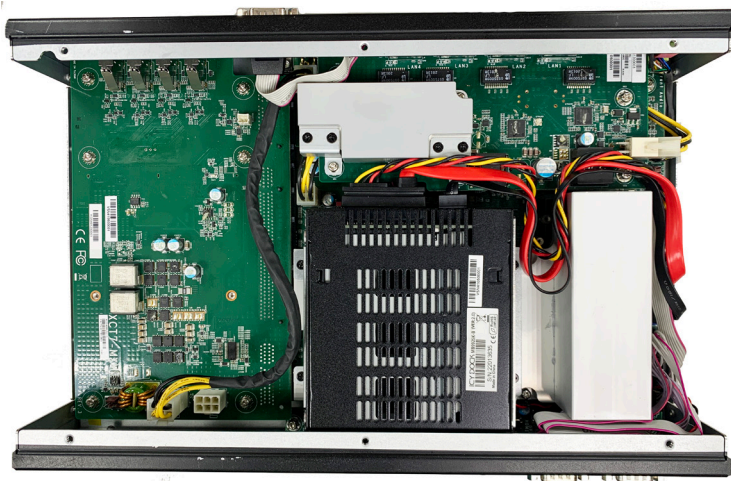
Step 2:

Lift the cover to open the system.



Step 3:

The board can be easily accessed after the chassis cover is removed.



Installing an Antenna

Before installing the antenna, please make sure that the following safety cautions are wellattended.

1. Make sure the PC and all other peripheral devices connected to it has been powered down.
2. Disconnect all power cords and cables.

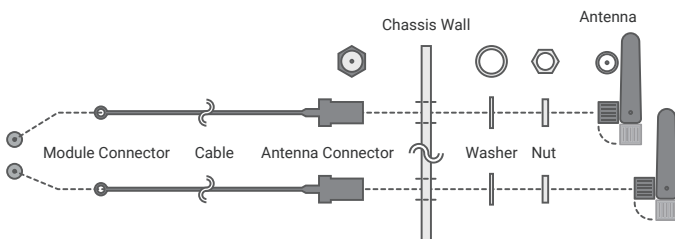
Step 1:

There are antenna holes reserved on every side of the system and covered by rubber plugs. Please remove the plug prior to installing an antenna.



Step 2:

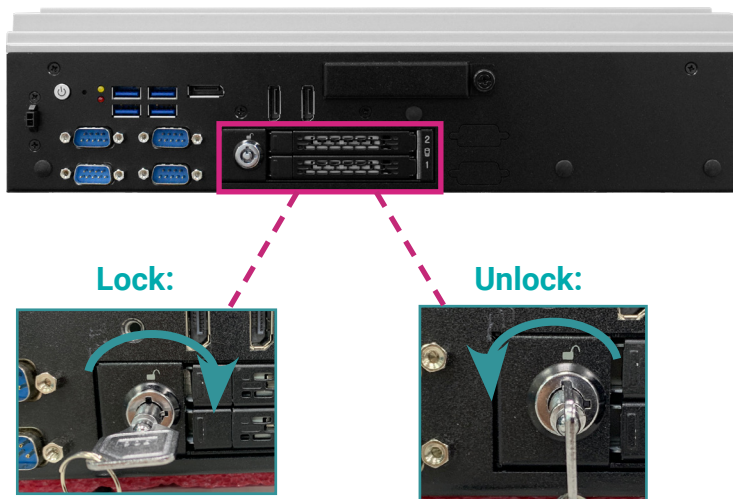
Connect the internal cable to the board's antenna connector, screw the antenna connector through the antenna hole with washers and nuts, and screw on the antenna as illustrated below.



Inserting a 2.5" HDD/SDD

Step 1:

The 2.5" HDD/SDD slots on the front side of the system.
Find the keyslot. Insert the key included inside the package to unlock it.



Step 2:

Once unlocked, press in gently the eject button until the tray is released.



Step 3:

Pull the tray out and slide the drive into the slot until the drive is fully seated.



Step 4:

Push the tray back in and close the drive latch to lock the drive in place.



Important:

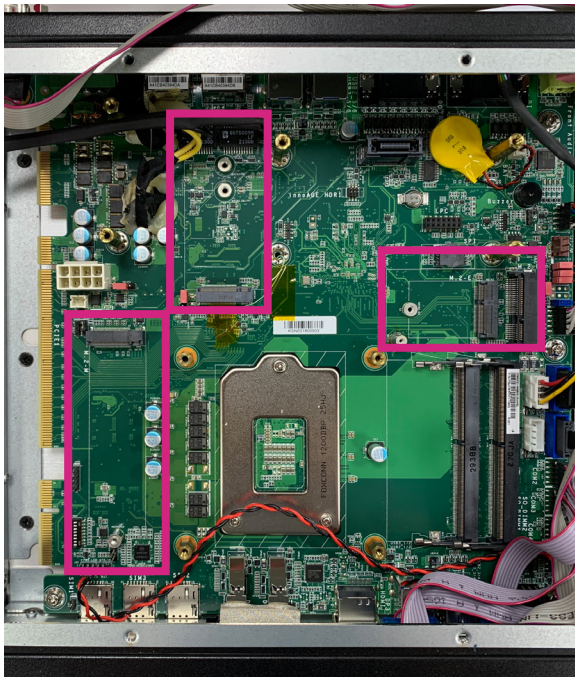
Excessive force may damage its mechanical parts.

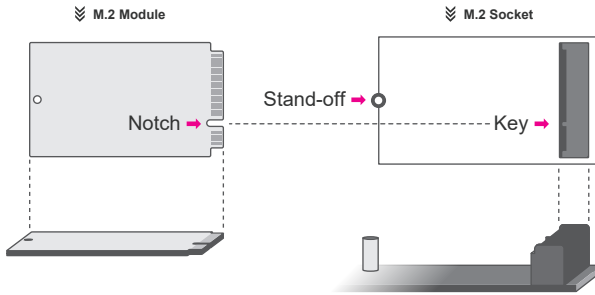
If the HDD/SSD is inserted backward into the slot, forcing the device may damage the slot.

Installing the M.2 Module

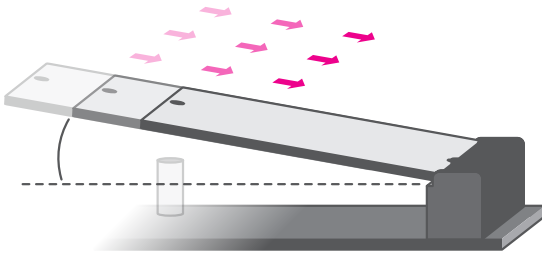
Before installing the M.2 module into the M.2 socket, please make sure that the following safety cautions are well-attended.

1. Make sure the PC and all other peripheral devices connected to it has been powered down.
2. Disconnect all power cords and cables.
3. Locate the M.2 socket on the system board
4. Make sure the notch on card is aligned to the key on the socket.
5. Make sure the standoff screw is removed from the standoff.



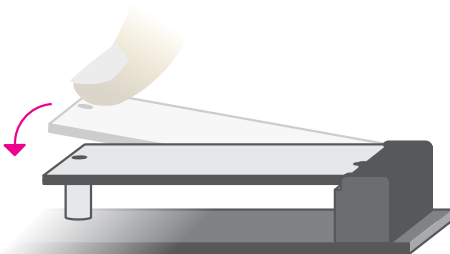


Please follow the steps below to install the card into the socket.



Step 1:

Insert the card into the socket at an angle while making sure the notch and key are perfectly aligned.



Step 2:

Press the end of the card far from the socket down until the gap between the card and the stand-off closes up.



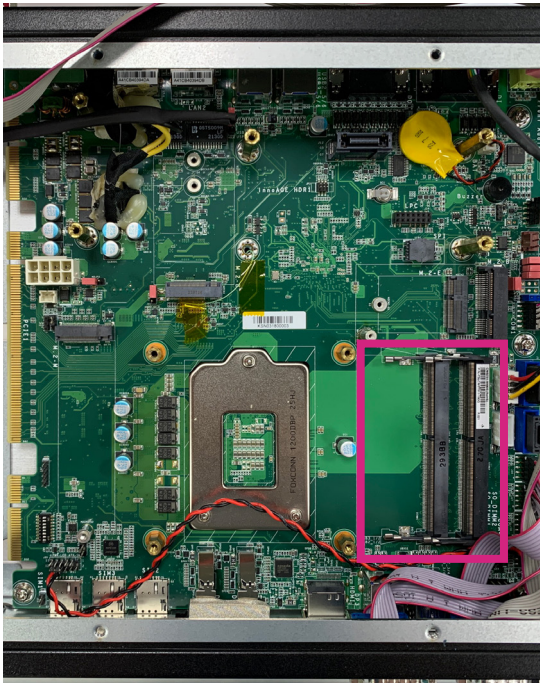
Step 3:

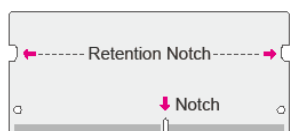
Screw tight the card onto the stand-off with a screw driver and a stand-off screw until the gap between the card and the stand-off closes up. The card should be lying parallel to the board when it's correctly mounted.

Installing the SO-DIMM Module

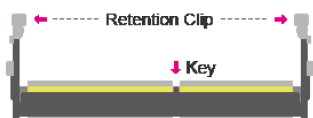
Before installing the memory module, please make sure that the following safety cautions are well-attended.

1. Make sure the PC and all other peripheral devices connected to it has been powered down.
2. Disconnect all power cords and cables.
3. Locate the SO-DIMM socket on the system board
4. Make sure the notch on memory card is aligned to the key on the socket.



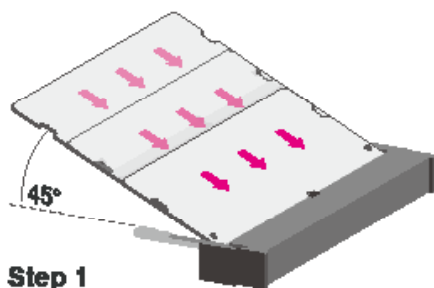


«« DDR4 SO-DIMM



«« Socket Top View

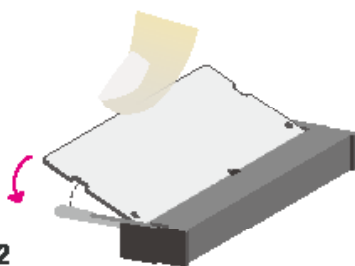
Please follow the steps below to install the memory card into the socket.



Step 1

Step 1:

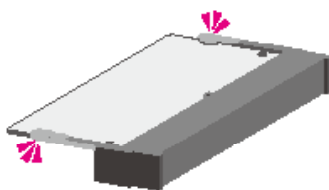
Insert the memory card into the slot while making sure 1) the notch and the key are aligned, and 2) the non-connector end rises approximately 45 degrees horizontally. Press the card firmly into the socket while applying and maintaining even pressure on both ends.



Step 2

Step 2:

Press the end of the card far from the socket down while making sure the retention notch and the clip align as indicated by the dotted line in the illustration. If the retention notch and the clip do not align, please remove the card and re-insert it. Press the card all the way down.



Step 3

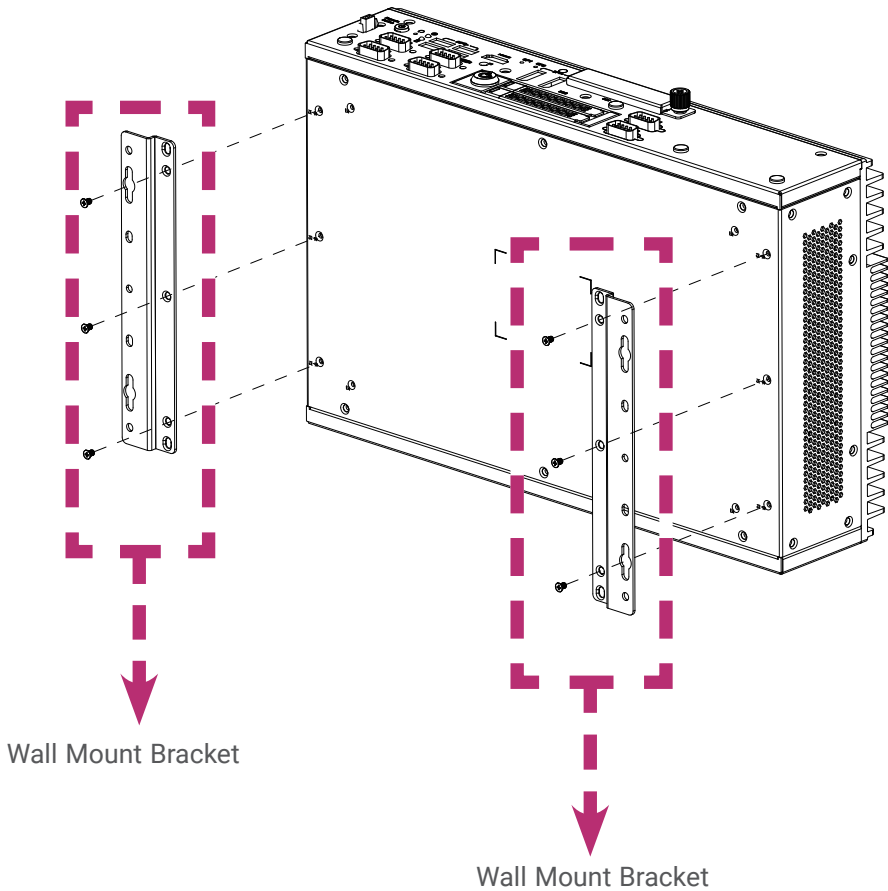
Step 3:

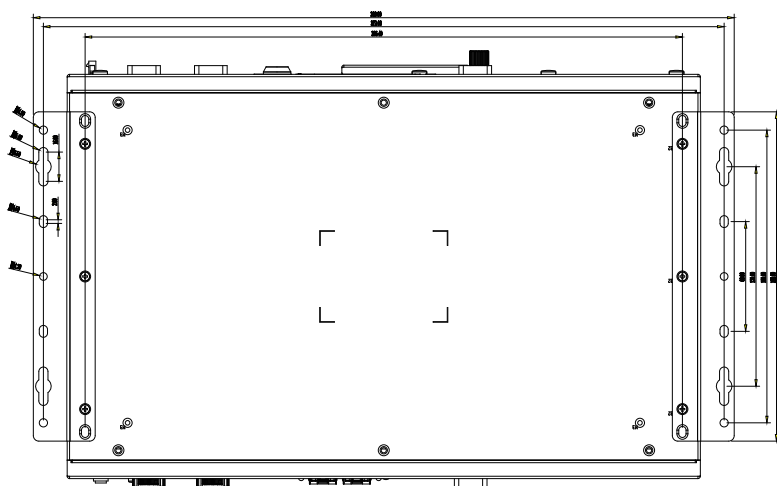
The clips snap automatically and abruptly to the retention notches of the card sounding a distinctive click, and lock the card in place. Inspect that the clip sits in the notch. If not, please pull the clips outward, release and remove the card, and mount it again.



Mounting Options

The wall mount kit containing two mounting brackets can be attached to the bottom of the system for mounting onto desired locations, such as walls, stands, or shelves. Locate the mounting holes on the bottom of the system as shown in the photo. Screw on the two brackets onto the system with six screws as illustrated below.





DFI reserves the right to change the specifications at any time prior to the product's release. This QR may be based on the product's revision. For more documentation and drivers, please visit the download page at www.dfi.com/downloadcenter, or via the QR codes to the right.

