

DFI[®]

ES520-HU Installation Guide



Package Contents

- 1 ES520-HU system unit

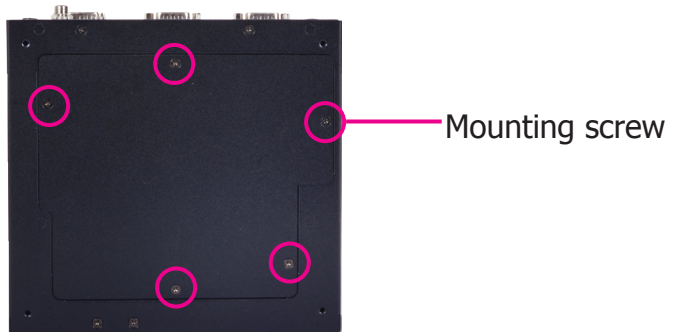
DFI reserves the right to change the specifications at any time prior to the product's release. For the latest revision and for a more details of the installation process, please refer to the user's manual on the website.

www.dfi.com

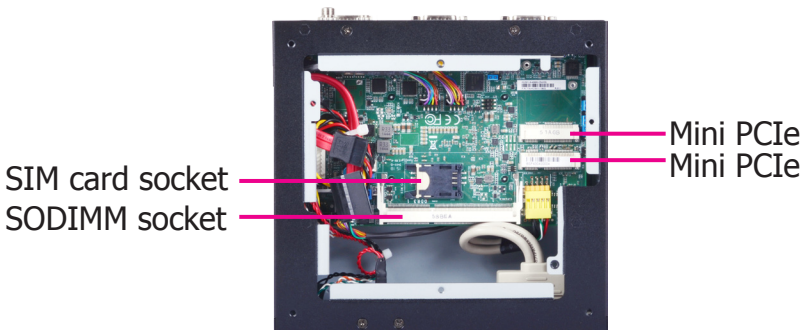


Removing the Chassis Cover

1. Make sure the system and all other peripheral devices connected to it has been powered-off.
2. Disconnect all power cords and cables.
3. Remove the 5 mounting screws to open the cover on the bottom of the system.



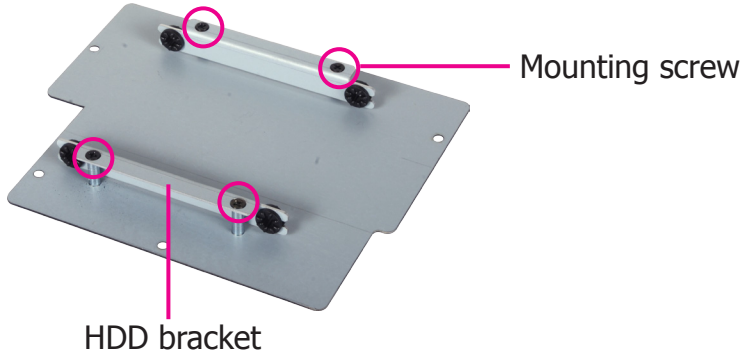
4. 2 Mini PCIe slots, the SODIMM socket and the SIM card socket are readily accessible after removing the chassis cover.





Installing a 2.5" SATA Drive

1. Fasten the 4 mounting screws that secure HDD brackets firmly to the system cover.



2. Align the mounting holes of the SATA drive with the mounting holes on the HDD brackets and then use the mounting screws provided to secure the drive in place.

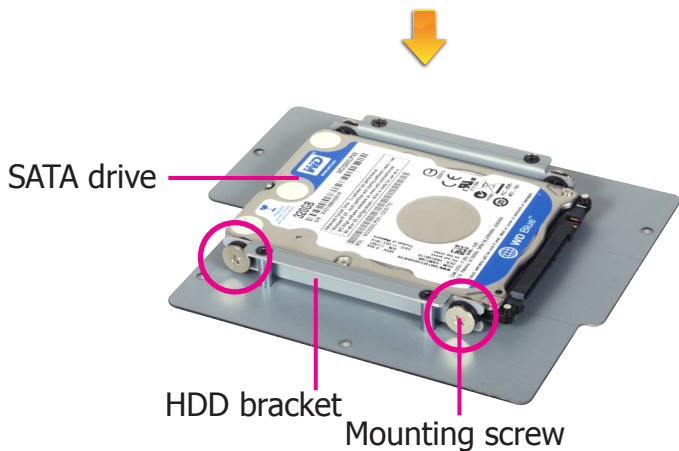
Mounting screws



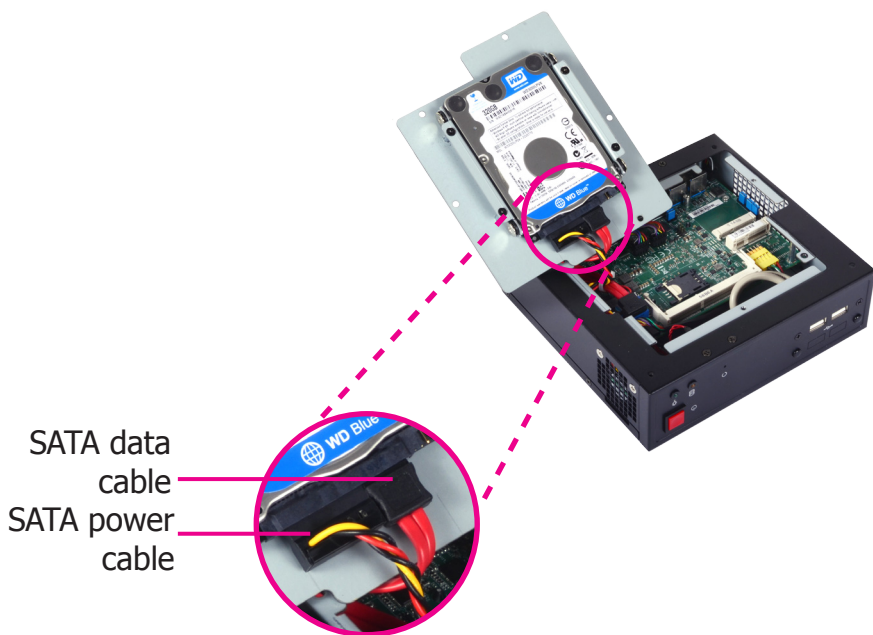
SATA drive

HDD bracket

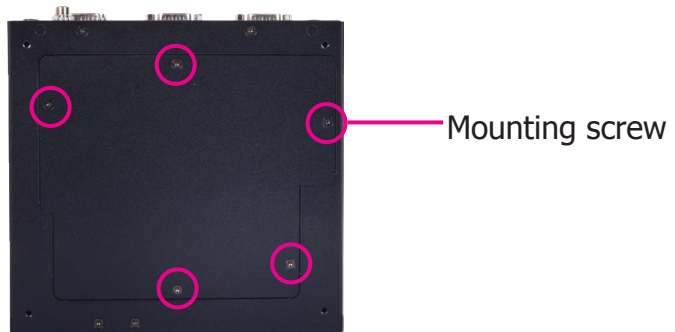




3. Connect the SATA data cable and the SATA power cable to the connectors on the SATA drive.

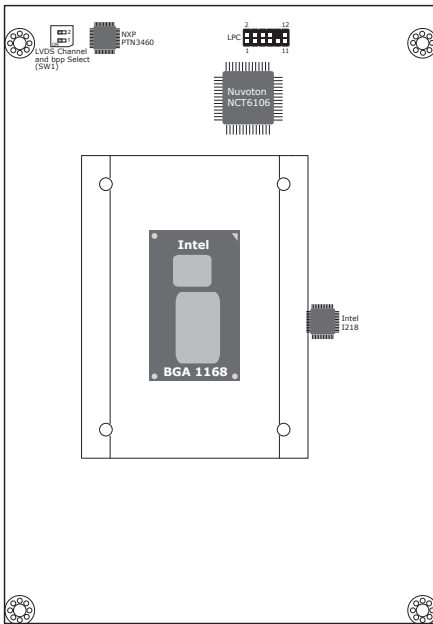


4. After completing steps above, fasten the cover with 5 mounting screws.

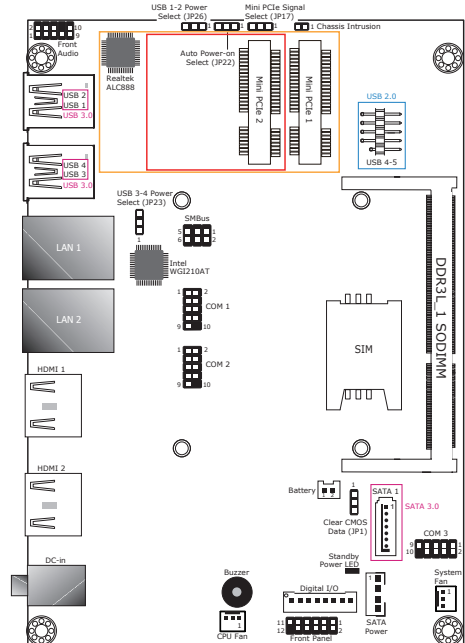




Board Layout and Jumper Settings



TOP



BOTTOM

USB Power Select: 1-2 (JP26), 3-4 (JP23)	
+5V (default)	1-2 On
+5V_standby	2-3 On
Auto Power-on Select	
Power-on via power button (default)	1-2 On
Power-on via AC power	2-3 On

Mini PCIe Signal Select	
PCIe (default)	1-2 On
mSATA	2-3 On
Clear CMOS Data	
Normal (default)	1-2 On
Clear CMOS Data	2-3 On