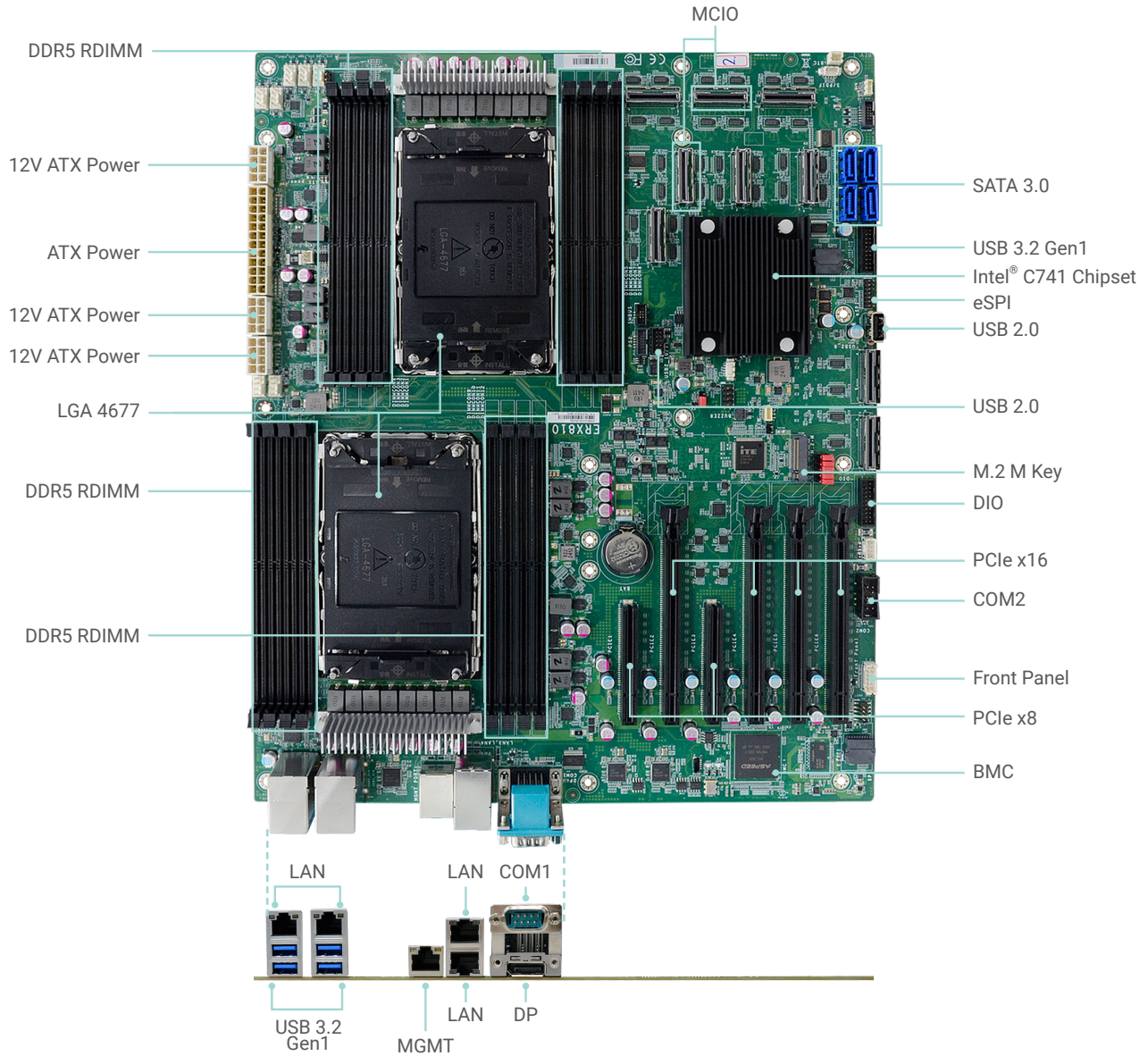


# ERX810-C741

Server-grade

5th/4th Gen Intel® Xeon® Scalable Family



Top View

## KEY FEATURES



### DDR5

16 DDR5 ECC-RDIMM up to 2048GB



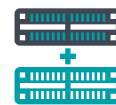
### Single Display

DP



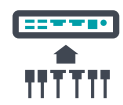
### Support IPMI/Redfish

OOB Remote Management



### Multiple Expansion

4 PCIe x16 (Gen 5),  
2 PCIe x8 (Gen5),  
1 M.2 M key 2280

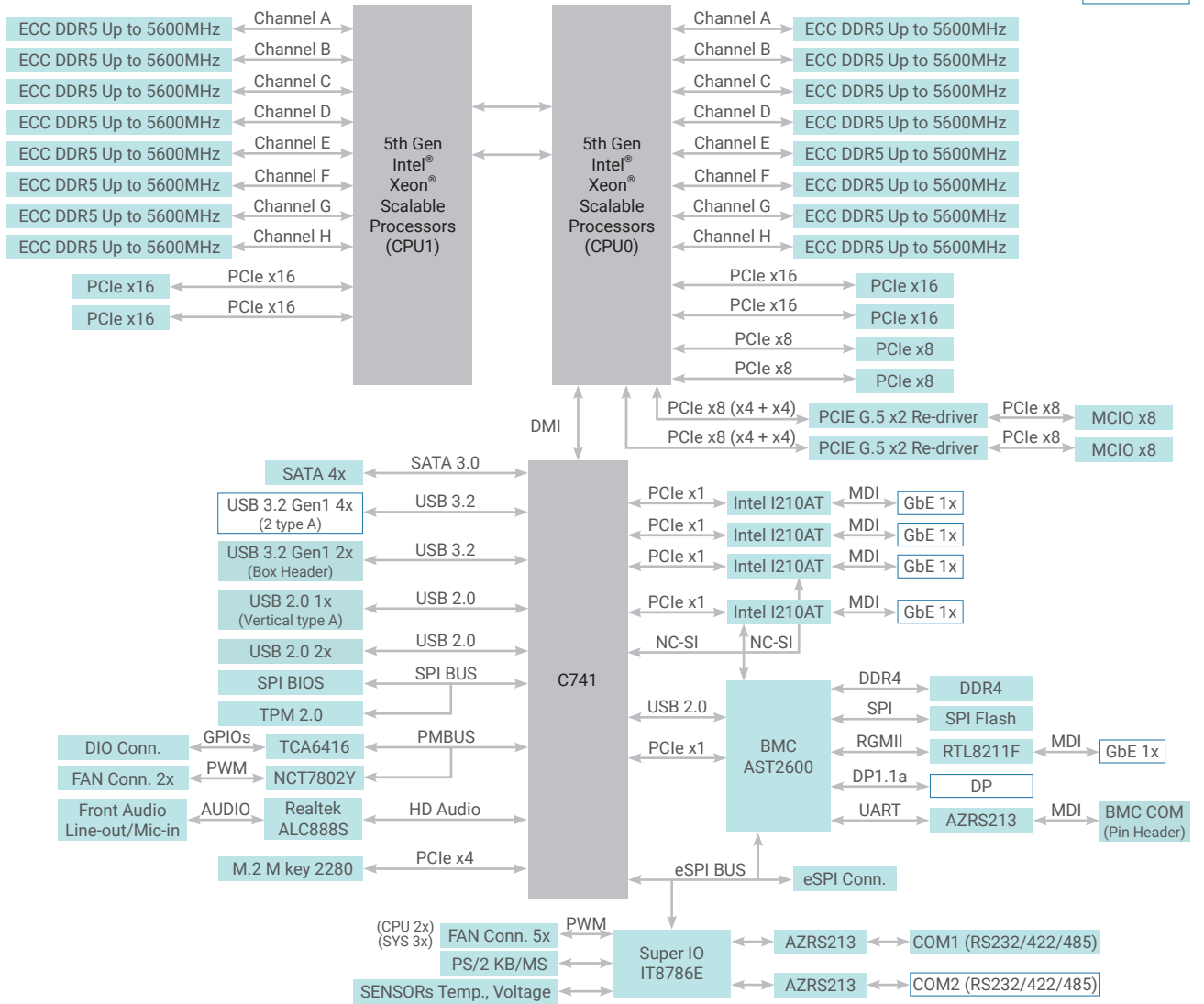


### Rich I/O

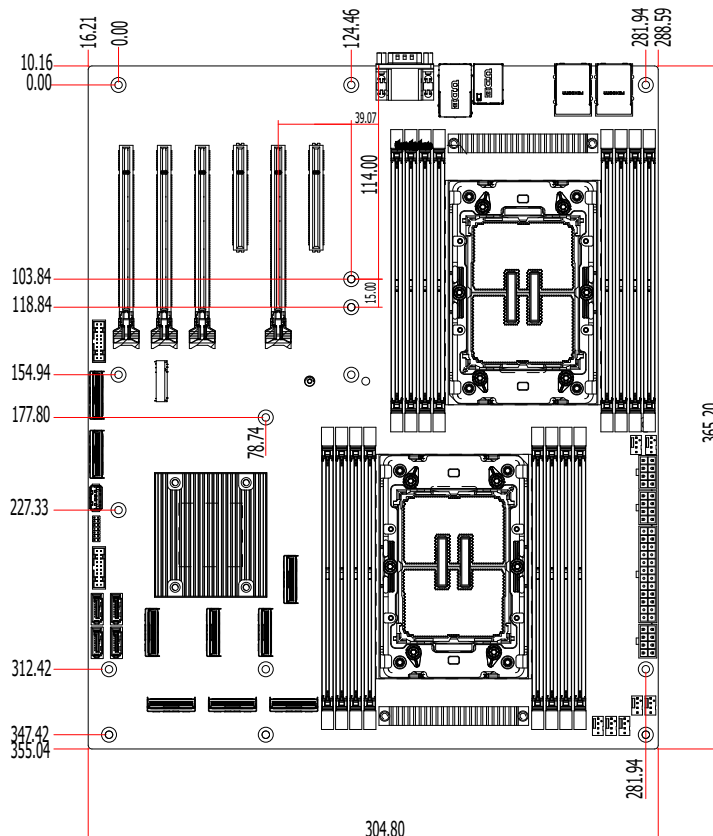
4 Intel® GbE, 4 SATA 3.0,  
6 USB 3.2, 2 USB 2.0,  
1 Vertical USB 2.0, 2 COM  
1 Dedicated IPMI

# BLOCK DIAGRAM

REAR IO



# MECHANICAL DRAWING



## SPECIFICATION

SYSTEM	<b>Processor</b>	5th Generation Intel® Xeon® Scalable Processor Family, LGA 4677 Socket, TDP upto 270W: Intel® Xeon® Gold 6548Y+ Processor (32 Cores, 60 MB Cache, up to 4.1 GHz); 250W Intel® Xeon® Gold 6548N Processor (32 Cores, 60 MB Cache, up to 4.1 GHz); 250W Intel® Xeon® Gold 6538N Processor (32 Cores, 60 MB Cache, up to 4.1 GHz); 205W Intel® Xeon® Gold 6530 Processor (32 Cores, 160 MB Cache, up to 4 GHz); 270W Intel® Xeon® Gold 6526Y Processor (16 Cores, 37.5 MB Cache, up to 3.9 GHz); 195W Intel® Xeon® Gold 5520+ Processor (28 Cores, 52.5 MB Cache, up to 4 GHz); 205W Intel® Xeon® Gold 5515+ Processor (8 Cores, 22.5 MB Cache, up to 4.1 GHz); 165W Intel® Xeon® Silver 4516Y+ Processor (24 Cores, 45 MB Cache, up to 3.7 GHz); 185W Intel® Xeon® Silver 4514Y Processor (16 Cores, 30 MB Cache, up to 3.4 GHz); 150W Intel® Xeon® Silver 4510 Processor (12 Cores, 30 MB Cache, up to 4.1 GHz); 150W Intel® Xeon® Silver 4510T Processor (12 Cores, 30 MB Cache, up to 3.7 GHz); 115W Intel® Xeon® Silver 4509Y Processor (8 Cores, 22.5 MB Cache, up to 4.1 GHz); 125W  4th Generation Intel® Xeon® Scalable Processor Family, LGA 4677 Socket, TDP upto 270W: Intel® Xeon® Gold 6448Y Processor (32 Cores, 60 MB Cache, up to 4.1 GHz); 225W Intel® Xeon® Gold 6438N Processor (32 Cores, 60 MB Cache, up to 3.6 GHz); 205W Intel® Xeon® Gold 6430 Processor (32 Cores, 60 MB Cache, up to 3.40 GHz); 270W Intel® Xeon® Gold 6428N Processor (32 Cores, 60 MB Cache, up to 3.80 GHz); 185W Intel® Xeon® Gold 6426Y Processor (16 Cores, 37.5 MB Cache, up to 4.10 GHz); 185W Intel® Xeon® Gold 6418H Processor (24 Cores, 60 MB Cache, up to 4.00 GHz); 185W Intel® Xeon® Gold 5420+ Processor (28 Cores, 52.5 MB Cache, up to 4.10 GHz); 205W Intel® Xeon® Gold 5418N Processor (24 Cores, 45 MB Cache, up to 3.80 GHz); 165W Intel® Xeon® Gold 5418Y Processor (24 Cores, 45 MB Cache, up to 3.80 GHz); 185W Intel® Xeon® Gold 5415+ Processor (8 Cores, 22.5 MB Cache, up to 4.10 GHz); 150W Intel® Xeon® Silver 4416+ Processor (20 Cores, 37.5 MB Cache, up to 3.90 GHz); 165W Intel® Xeon® Silver 4410T Processor (10 Cores, 26.25 MB Cache, up to 4.00 GHz); 150W Intel® Xeon® Silver 4410Y Processor (12 Cores, 30 MB Cache, up to 3.90 GHz); 150W	
	<b>Chipset</b>	Intel® C741 Chipset	
	<b>Memory</b>	16 x ECC-RDIMM up to 2048GB DDR5 Max. 5600MHz	
	<b>BIOS</b>	Insyde	
	<b>GRAPHICS</b>	<b>Controller</b>	BMC AST2600
	<b>Display</b>	1 x DP	
	<b>Single Display</b>	DP	
<b>EXPANSION</b>	<b>Interface</b>	4 x PCIe x16 (Gen 5) 2 x PCIe x8 (Gen5) 1 x M.2 M key 2280	
<b>AUDIO</b>	<b>Audio Codec</b>	ALC888S	
<b>ETHERNET</b>	<b>Controller</b>	4 x Intel® I210 IPMI: RTL8211F	
<b>REAR I/O</b>	<b>Serial</b>	1 x RS-232/422/485 (DB-9)	
	<b>Ethernet</b>	4 x GbE 1 x Dedicated IPMI LAN	
	<b>USB</b>	4 x USB 3.2 Gen1	
	<b>Display</b>	1 x DP	
	<b>PS/2</b>	1 x PS/2	
<b>INTERNAL I/O</b>	<b>Serial</b>	1 x RS-232/422/485	
	<b>USB</b>	2 x USB 3.2 Gen1 2 x USB 2.0 1 x Vertical USB 2.0	
	<b>Audio</b>	1 x Front Audio	
	<b>DIO</b>	16-bit DIO	
	<b>LPC</b>	1 x LPC	
	<b>SATA</b>	4 x SATA 3.0 RAID 0/1/5/10	
	<b>PMBUS</b>	1 x PMBUS	
	<b>MCIO</b>	2 x MCIO	
<b>SECURITY</b>	<b>TPM</b>	TPM 2.0	
<b>POWER</b>	<b>Type</b>	ATX	
<b>ENVIRONMENT</b>	<b>Temperature</b>	Operating: 0 to 45°C	
<b>MECHANICAL</b>	<b>Dimensions</b>	305 x 365 mm	
	<b>Height</b>	PCB: TBD	Top Side: TBD Bottom Side: TBD
<b>CERTIFICATION</b>	<b>Certification</b>	CE, FCC, RoHS, UKCA	

## PACKING LIST

• ERX810-C741 Motherboard	770-ERX8101-000G
• 1 M.2 screw	A32-112016-041G
• 1 M.2 standoff	A33-725019-090G
• 1 IO Shield	A49-ERX810-000G
• 1 Serial ATA data cable (Length: 500mm)	332-553001-005G
• 2 COOLER CARRIER	A51-099027-000G

## OPTIONAL ITEMS

• CPU COOLER, LGA 4677 118*82*106mm	A71-101164-000G
-------------------------------------	-----------------